



THE LUXURY TRAIN TRAVEL COMPANY

EASTERN EUROPE DISCOVERY

GOLDEN EAGLE | DANUBE EXPRESS



★ **ITINERARY PAGE 5**

★ **PRICING & INCLUSIONS PAGE 22**



**Safe
travels**

by

WORLD
TRAVEL &
TOURISM
COUNCIL

CONTENTS

- 3 Map & Overview
- 5 Day by Day Itinerary
- 22 ... Tour Dates & Pricing
- 23 ... Inclusions & Exclusions
- 24 ... Why Book with Us?
- 25 ... Golden Eagle Difference
- 27 ... The Train & Cabin Classes
- 37 ... Important Information
- 39 ... Recommended Reading

ABOUT OUR COMPANY

Established as one of the leading, independent and family owned luxury train specialists, our focus is on well thought through private and personally selected rail adventures. Our emphasis is very much on the right trip for you and we work closely with you in order to achieve this. We regard the rail journeys we offer as a trip of a lifetime and use our experience and knowledge to make it that for you.

The Luxury Train Travel Company is a trading name of Headseast Ltd, a UK based, independent, family owned travel company. We operate several brands in addition to The Luxury Train Travel Company including [“The Latin America Travel Company”](#) [“The Trans-Siberian Travel Company”](#) and [“The China Travel Company”](#). Our clients come from all over the world.



GOLDEN EAGLE DANUBE EXPRESS | EASTERN EUROPE DISCOVERY

11 NIGHTS / 12 DAYS

Budapest • Krakow • Warsaw •
Malbork • Gdansk • Berlin •
Dresden • Prague • Salzburg •
Vienna

Centuries of influential empires have shaped the captivating countries of Eastern Europe, leaving a lasting impression on the cultures, languages and religions seen here today.

Our 12-day voyage is enriched with ancient architectural masterpieces, encompassing the medieval splendour, baroque elegance, and gothic grandeur of some of Europe's most spectacular cities.



GOLDEN EAGLE DANUBE EXPRESS | EASTERN EUROPE DISCOVERY

Dear Sir / Madam,

Please find full details of this itinerary in this dossier. If you have any questions at all please do not hesitate to contact me.

Best regards,

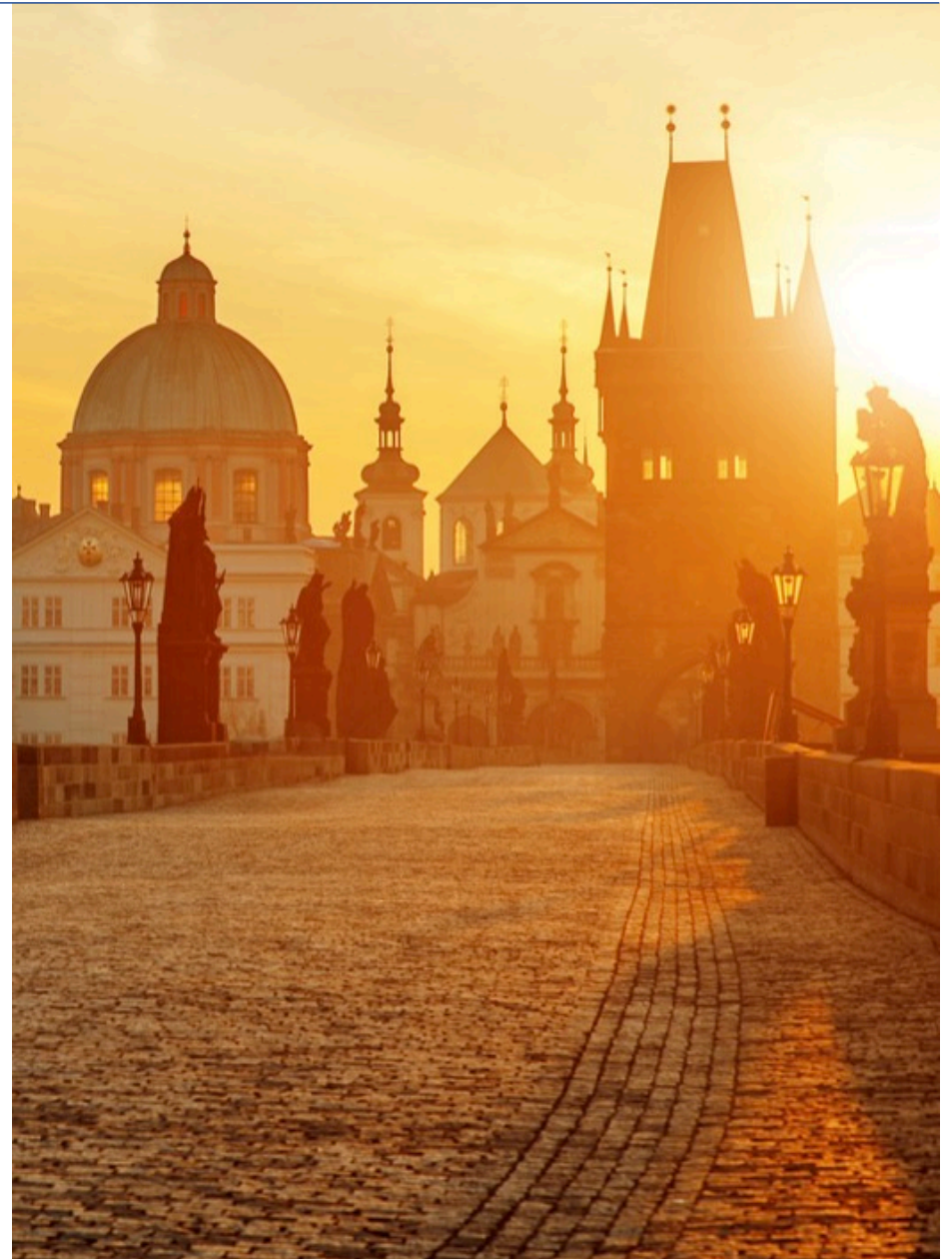
The Luxury Train Travel Company.

THE LUXURY TRAIN TRAVEL COMPANY

- www.theluxurytraintravelcompany.com
- enquiry@theluxurytraintravelcompany.com
- ☎ +44 (0)20 8191 0620
- ABTA member Y1699
- ATOL License 10287

HIGHLIGHTS - PLEASE BOOK WELL IN ADVANCE

- Admire the medieval and Baroque splendour of ancient Budapest.
- Explore the stunning architecture of Krakow.
- Visit the old Town of Warsaw full of history.
- Malbork Castle and the waterfront of Gdansk.
- Full day program exploring east and west Berlin.
- Enjoy wine Tasting in the Elbe Valley.
- Prague, the 'City of a Hundred Spires.'
- The Baroque splendour of Salzburg.
- A private concert at the House of Mozart in Vienna.





DETAILED ITINERARY

The following pages contain a detailed day by day itinerary for this trip. Note that all itineraries are subject to change and a final itinerary will be given shortly before your trip begins.

"I can't tell you how much we appreciate all the pre planning you helped us with. It was a trip of a lifetime experienced by few. Personally I feel privileged to have experienced this part of the world. Thanks again for all you did for us."

Gail & Cathy



YOUR DETAILED DAY BY DAY ITINERARY

DAY 1

BUDAPEST

ARRIVAL & A WELCOME RECEPTION & DINNER

On arrivals day in Budapest, you will be met at the airport, train station or river ship landing stage and transferred to the Four Seasons Hotel Gresham Palace (or similar) for a two-night stay.

Enjoy a welcome reception dinner in the elegant surrounds of this art nouveau landmark, with its panoramic views across the River Danube, where you can meet your fellow travellers on this highly-anticipated journey.

 **Meals Included:** Dinner.

A WARM WELCOME

From the moment our guests arrive, they are cared for by our professional train management team. On arrival at the airport or railway station, guests are met and transferred to our first night's stay in a 5 star hotel with no tipping or baggage handling charges to be concerned about.

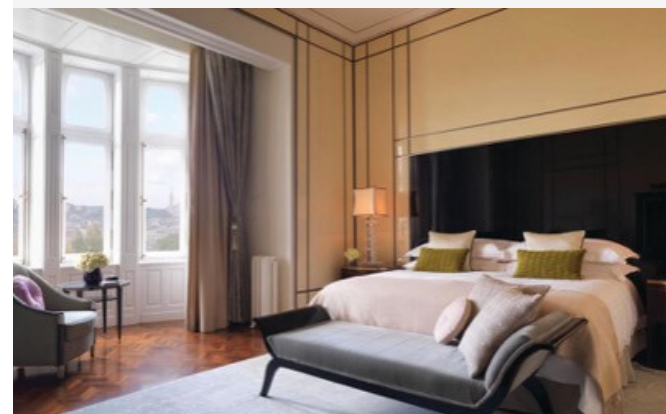
On the first evening, all our guests are invited to a champagne reception prior to the welcome dinner, to get acquainted with fellow guests and to meet with the train management team and learn about the excitement that awaits them.

OVERNIGHT

FOUR SEASONS GRESHAM PALACE



Overlooking a park on the banks of the Danube, this luxe, art nouveau-style hotel has a lobby bar and a brasserie, plus a spa, gym and indoor pool.



*Hotel shown for guidance only with exact hotels not finalised until 6 weeks before the trip start date.

YOUR DETAILED DAY BY DAY ITINERARY

DAY 2

BUDAPEST

FULL DAY EXPLORING THIS BEAUTIFUL CITY

Budapest is actually two cities separated by the Danube. The old city of Buda and the imposing Royal Palace, dominates the city with stunning views across the Danube to the commercial heart of Pest. Our panoramic city tour by coach includes the Castle District, St. Mathias Church and Fishermen's Bastion. We will also visit the Parliament with an audio-guided tour and have a private tour of the Opera House with drinks reception.

After lunch in a local restaurant, enjoy the rest of the day at your leisure – stroll along the banks of the Danube or perhaps head to one of the city's famous thermal baths for a rejuvenating dip.

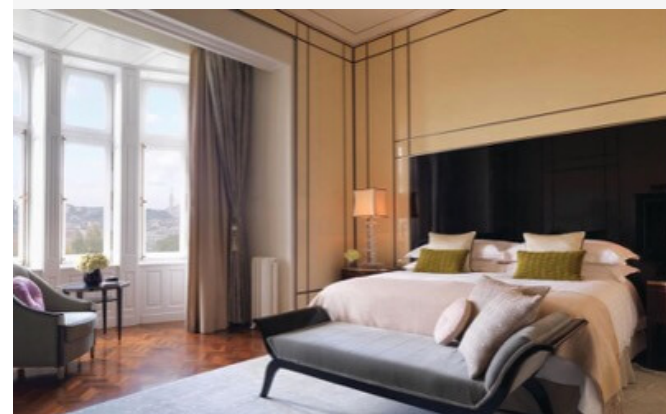
 **Meals Included:** Breakfast & Lunch.

OVERNIGHT

FOUR SEASONS GRESHAM PALACE



Overlooking a park on the banks of the Danube, this luxe, art nouveau-style hotel has a lobby bar and a brasserie, plus a spa, gym and indoor pool.



*Hotel shown for guidance only with exact hotels not finalised until 6 weeks before the trip start date.

DAY 3

BUDAPEST

JOIN THE DANUBE EXPRESS & JOURNEY TOWARDS POLAND

This morning in Budapest is at leisure.

We join our private train, the Golden Eagle Danube Express, for an afternoon departure from Budapest. We enjoy a drinks reception in the impressive Royal Waiting Room at Budapest Nyugati station before boarding our private train.

Marking the beginning of your voyage of a lifetime, our private brass band will perform as the train departs from the station, and our uniformed train staff will be there to escort you to your private en-suite cabin.

Settle in to your well-appointed accommodation and later enjoy a Welcome Dinner onboard as the train makes its way towards Poland.

 **Meals Included:** Breakfast & Dinner.

OVERNIGHT



BUDAPEST - KRAKOW



HIGHLIGHTS OF THIS JOURNEY

BUDAPEST



KRAKOW



WARSAW



DAY 4

KRAKOW

SOMBRE VISIT TO AUSCHWITZ & ON TO KRAKOW IN POLAND

Once a royal capital with an extraordinary history, and now a lively university town with fashionable bars and restaurants, Krakow is a fascinating city with beautiful monuments and an exuberant atmosphere.

This morning the train makes a scheduled stop at Oswiecim, the station for Auschwitz-Birkenau where we will make a 2-hour visit to the location of the evocative concentration camp and museum. Declared by UNESCO as a World Heritage Site we embark upon a deeply moving guided tour which stands as a stark reminder of the horrors that took place here. Today, Auschwitz-Birkenau is preserved as a museum allowing visitors to reflect on the atrocities of the Holocaust and learn of the camp's history. (For ticketing purposes please advise at the time of booking if you wish to visit Auschwitz-Birkenau) From here we will continue by coach into the centre of stunning Krakow, where we will enjoy lunch in the Old Town.

Also today we will visit the Wieliczka Salt Mine, a unique venue full of chambers excavated and sculpted in rock salt. Descend the 360 steps in to the mines and be amazed at the devotion of the miners who carved the incredible Chapel of Salt, a well-deserved place on the UNESCO World Heritage list.

For guests not wishing to visit Auschwitz-Birkenau or Wieliczka Salt Mine, a guided walking tour of Krakow's Old Town including Wawel Royal Castle and the Jewish Quarter will be offered.

 **Meals Included:** Breakfast, Lunch & Dinner.

OVERNIGHT



KRAKOW - WARSAW



DAY 5

WARSAW

A DAY EXPLORING THE POLISH CAPITAL

This morning we arrive to the Polish capital of Warsaw and where we will appreciate the extraordinary transformation of a place once almost destroyed by war. When you cross the Vistula River and look at the Old Town from a distance, you are struck by how unusual the panorama of the city is – skyscrapers rise above the red roofs of the Old Town. Historical buildings blend in harmoniously with modern architecture, and the city surprises us by revealing its second face.

Our guided tour takes us on a journey through the Old Town and along the Royal Route before heading into the area of the former Warsaw Ghetto. The Old Town boasts a nostalgic charm with its colourful townhouses and the exceptional atmosphere of its narrow streets. Here we will visit the award winning Polin Museum of the History of Polish Jews, which showcases the 1,000 year history of the Polish Jews and the contribution of their community to Polish life.

In the afternoon we are privileged to present to our guests a delightful private Chopin piano recital at the Fryderyk Concert Hall.

 **Meals Included:** Breakfast, Lunch & Dinner.

OVERNIGHT



WARSAW - MALBORK



HIGHLIGHTS OF THIS JOURNEY

BERLIN



GDANSK



MALBORK



DAY 6

MALBORK & GDANSK

THE CASTLE AT MALBORK & GDANSK WATERFRONT

This morning we visit Malbork whose castle, a UNESCO World Heritage Site, was the seat of the Teutonic State from 1280. Teutonic Knights originally built a fortified monastery here, later known as the Upper Castle. In the 13th century a huge brick fortress was completed and stands overlooking the River Nogat. The museum houses valuable collections of artistic amber wares, old weapons, and military equipment.

We return to the train for lunch and continue our journey through Poland towards Gdansk. The coastal region of Poland has an important place in Polish consciousness as a key location at the start of World War Two in September 1939. This is also where the famous Solidarity independent trade union movement started in 1980 for the protection of worker's rights, which later became the symbol of resistance against the government and where the fall of Communism in Central Europe began.

We spend the afternoon exploring the waterfront shipbuilding city of Gdansk. Our visit will include a tour of the remarkable European Solidarity Centre in Gdansk, which presents the 20th century history of the political changes leading to the collapse of communism and the Soviet Union. We also enjoy a beautiful organ concert at Oliwa Cathedral and a visit to Dlugi Targ (Long Market), one of the most beautiful streets of old Gdansk.

 **Meals Included:** Breakfast, Lunch & Dinner.

OVERNIGHT



GDANSK - BERLIN



DAY 7

BERLIN

A FULL DAY EXPLORING THE GERMAN CAPITAL

Whilst enjoying breakfast on board, we will arrive into Berlin for a full day's programme with a number of options to choose from.

After years of division, Berlin has risen once again to become one of Europe's most glamorous capital cities, with superb museums, fine churches, wide boulevards, and a thriving cultural life. Today we will see the highlights of both East and West Berlin including the Berlin Wall, Brandenburg Gate and the Reichstag, the famous Renaissance style building that once again houses Germany's parliament.

Our Freedom of Choice options today include the opportunity to drive a VEB Trabant, your very own authentic East German vehicle. Travel through the middle and the former east part of the city along the Karl-Marx-Allee and East Side Gallery, over Oberbaumbridge and through the quarter Kreuzberg. A unique hands-on experience across the once-divided city of Berlin!

For guests not taking the driving experience option, there will be free time to explore the iconic Checkpoint Charlie Museum. There will also be free time after lunch for guests to experience more this wonderful city has to offer, maybe take some time for shopping along the famous Kurfürstendamm.

 **Meals Included:** Breakfast, Lunch & Dinner.

OVERNIGHT



BERLIN - DRESDEN



HIGHLIGHTS OF THIS JOURNEY

PRAGUE



DRESDEN



SALZBURG



DAY 8

DRESDEN & PRAGUE

JOURNEY FROM GERMANY TO THE CZECH REPUBLIC

This morning we arrive in the city of Dresden, located in the region of Saxony. Following its destruction in World War Two and stagnation behind the Iron Curtain, Dresden has now been restored to its former enchanting glory, with baroque architecture, rococo palaces and an amazing array of Renaissance art. Included on our morning city tour learn about the 700-year history of the iconic Frauenkirche (Church of our Lady). The church is the personification of Dresden's rising from the ashes. Admire its stunning Baroque architecture and hear stories of restoration and resilience surrounding this famous landmark.

We return to the train for a late lunch as we head to the Czech Republic for a late afternoon arrival in Prague.

Prague is one of the most beautifully preserved cities in Europe. It spans the Vltava River and is dominated by the 9th century Prague Castle, a stunning sight that can be seen almost anywhere in the city. Our tour takes in the Old Town Square with its many historic buildings and Astronomical Clock, the historic 14th century Charles Bridge and the Jewish Quarter.

Early evening, we will visit the stunning art nouveau Municipal House where there will be chance to experience a spectacular opera performance followed by a sumptuous dinner in the restaurant.

 **Meals Included:** Breakfast, Lunch & Dinner.

OVERNIGHT



PRAGUE



DAY 9

PRAGUE

A DAY SPENT IN THE ARCHITECTURAL TREAT OF PRAGUE

Today we join a vintage tram to travel through the city up the hill to Prague Castle area and a visit to the gothic St. Vitus Cathedral. The castle and its surrounding architectural gems occupy a hillside overlooking the city and river.

Following lunch there will be the opportunity for free time in the Old Town district, before returning to the train.

 **Meals Included:** Breakfast, Lunch & Dinner.

OVERNIGHT



PRAGUE - SALZBURG



HIGHLIGHTS OF THIS JOURNEY

SALZBURG



VIENNA



VIENNA



DAY 10

SALZBURG

WE REACH SALZBURG & ENJOY THE AUSTRIAN CULTURE

Today we explore Salzburg, starting at Mirabell Palace located in the heart of the city. Listed as a UNESCO World Heritage Site, the baroque 17th century palace is easily one of the most stunning landmarks in the city and made famous in more modern times as a location used in The Sound of Music.

A short distance from the palace on Market Square (Marketplatz) we will see the former Mozart Residence, now a museum. From here we will cross the Makartsteg bridge into the Old Town and walk along the Getreidegasse, Salzburg's most famous street which is renowned for its wrought-iron trade signs and the birthplace of Mozart.

For more than 400 years Hellbrunn Palace has enchanted its visitors with its 'trick' fountains. The idyllic location in the south of Salzburg served as a summer retreat for the Prince-Archbishop of Salzburg. Its baroque exterior conceals an exuberant interior made for entertaining, though the real draws are the whimsical trick fountains (Wasserspiele) in the gardens, which spew water from unexpected places.

 **Meals Included:** Breakfast, Lunch & Dinner.

OVERNIGHT



SALZBURG - VIENNA



DAY 11

VIENNA

ARRIVAL IN VIENNA & A PRIVATE CONCERT

This morning we enjoy our final meal onboard as we leave Salzburg on a majestic morning's journey over the breath-taking Semmering Pass before our lunchtime arrival into Vienna.

The stunning capital city of Austria enthralls visitors with its rich heritage. A seductive metropolis of elaborate palaces, renowned coffee houses, classical music and enchanting opera. This afternoon's programme will include a private concert featuring the Vienna Supreme Orchestra and a visit to the famous Schönbrunn Palace, or free time to explore yourself.

Tonight we stay overnight at a centrally located five-star hotel.

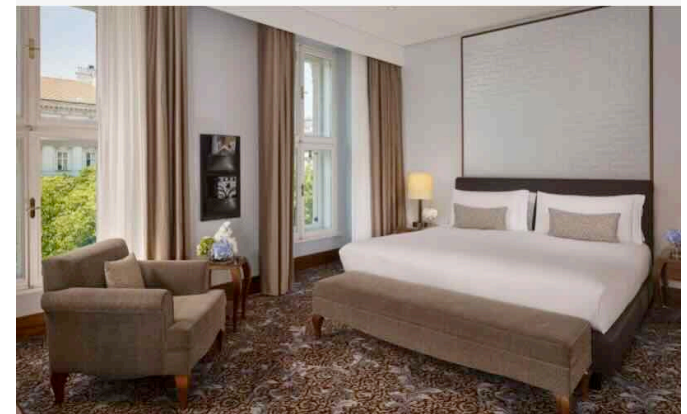
 **Meals Included:** Breakfast.

OVERNIGHT

RITZ-CARLTON VIENNA



The Ritz-Carlton Vienna blends historic elegance with modern luxury, offering refined service, exquisite dining, and a prime city location.



*Hotel shown for guidance only with exact hotels not finalised until 6 weeks before the trip start date.

DAY 12

END OF TOUR

DEPART AUSTRIA OR EXTEND YOUR STAY

Following breakfast on the final morning you will be transferred to the airport for onward flight departures. There is also an option to extend your stay in Vienna for additional nights to explore more of this fascinating city.

 **Meals Included:** Breakfast.



2026

EASTERN EUROPE DISCOVERY DATES & PRICES PER PERSON IN GBP / USD / EURO *

Starts in Budapest on the 19th August 2026 & finishes in Vienna on the 30th August 2026

* All Dates Subject To Availability - Many Trips Sell Out Long In Advance *

CABIN	DELUXE			SUPERIOR DELUXE		
	See following pages for cabin description			See following pages for cabin description		
TWIN	£ 15,500	\$ 19,900	€ 18,500	£ 19,900	\$ 25,600	€ 23,700
SINGLE	£ 22,900	\$ 29,700	€ 27,500	£ 33,300	\$ 42,900	€ 39,700
Deposit	25%	25%	25%	25%	25%	25%

* The published prices for this tour are as listed above in GB Pounds, US Dollars and Euros. However, we can quote and accept payment in Singaporean Dollars, Australian Dollars, Canadian Dollars and more. **Contact us** for a confirmed quote in your preferred currency.

TOUR INCLUSIONS

- ✓ 5 countries: Hungary, Poland, Germany, Czech Republic and Austria.
- ✓ Quality pre and post tour accommodation in Budapest and Vienna.
- ✓ Private en-suite accommodation on the Golden Eagle Danube Express train.
- ✓ Freshly prepared meals on board, using the finest local ingredients.
- ✓ Authentic dining experiences in local restaurants.
- ✓ Inclusive alcoholic and non-alcoholic beverages from Standard Bar list.
- ✓ Expertly guided off-train excursions as detailed in the itinerary.
- ✓ Cabin attendant service including evening turndown.
- ✓ Experienced Tour Management team.
- ✓ Arrival and departure transfers.
- ✓ All gratuities – on and off the train.
- ✓ Luggage portage throughout the journey.

NOT INCLUDED IN THIS TOUR

- ✗ International Airfare to / from the start / finish of the trip.
- ✗ Visas - we can advise and partner with [VisaCentral](#).
- ✗ Travel Insurance to cover any medical treatment etc.
- ✗ Discretionary gratuities to drivers and guides.

IMPORTANT INFORMATION & T & Cs

- The tour may be cancelled if the minimum number of participants required for a trip is not met. It is rare this happens and if it does you will be offered a date / trip change or refund of the deposit (any decision is taken outside 90 days before the trip start date). Note there may be no refund for additional services such as flights or other travel arrangements you have made separately.
- We require all clients to take out travel / trip cancellation and to have valid medical insurance for all our trips.
- Due to the intricate logistics of this tour, itinerary changes are sometimes unavoidable.
- On booking a deposit of 25% plus any international flights we are booking for you.
- Full payment is required 90 days before the trip start date.
- International flights, visa fees and any services not mentioned are not included in the price.

Updated Cancellation Terms from 1st October 2025:

- Up to 91 days prior to departure: 10% plus any flights we book for you.
- 90-61 days or less prior to departure: 50% of total price.
- Within 60 days or less prior to departure: 100% of total price.
- Any part of the program that is missed because of late arrival is non-refundable.

WHY BOOK THROUGH US ?

EXPERIENCE ✓

We have been arranging luxury train tours since 2008 and have long relationships with key providers.

PRICE PROMISE ✓

In most cases we will offer to match any bona fide, like for like quote for your trip from another agent or operator.

INDEPENDENT ADVICE ✓

We give open and impartial advice and it is important to us that you book the right rail trip for you.

PEACE OF MIND ✓

We are members of ABTA and most trips are protected by our IPP cover and ATOL bonding.



"I just wanted to say thank you for organising our wonderful holiday. All went smoothly and we were well taken care of. Thank you for the seamless organisation."

Kristopher Forbes



"The trip was great. Everything was smooth. This was very important to me as a solo female traveller. I felt safe and secure at all times. It was a well-balanced and organised trip. I really appreciated the effort that went into the trip."

Sarah Orozco



"You are amazing! Thank you so much for the fast response to my initial email, and the rapid answer to any questions I had, no matter how stupid they were! Your organisation was a great choice for me... I would highly recommend it."

Rachael Klein



"The booking process was very efficient. We appreciate you answered all our questions and presented a good plan. The trip itself was a wonderful old world Africa experience on the train – loved it."

Paige & Hugh Christensen



"It was the best trip we've ever taken! It was amazing! I cannot say enough about it. The ease of train travel, and guides were all pleasant surprises."

Lawrence & Conner Dudley



"We appreciated how easy it was to talk with you on the phone, person-to-person. This was very helpful. It's nice to meet people with similar interests and goals. We thank you and your company for everything you did to create a memorable train experience."

Bethany Leblanc



"You made booking flights and everything else very simple. You always provided excellent service, and responded to our inquiries promptly. Thanks for your attention to detail towards your customers."

Tania & Arthur Lindsey



"I can't tell you how much we appreciate all the pre planning you helped us with. Thanks again for all you did for us."

Gail & Cathy

THE GOLDEN EAGLE DANUBE EXPRESS DIFFERENCE

• EXPERIENCED TOUR MANAGERS

Our experienced tour managers and their assistants are selected for their travel knowledge and their linguistic and organisational abilities allowing you to relax and enjoy your rail cruise. We receive exceptional passenger comments about our Tour Managers and their aim is to ensure you enjoy every minute of your holiday.

• HOTEL & TRAIN ACCOMMODATION

Although you will spend much of your time sightseeing or relaxing in the train's public areas, you will find your hotel room or cabin a welcome retreat at the end of a rewarding day. All hotels are of 5 star standard or, in certain locations, the best available. Room upgrades are available on request and at extra cost.

• WELCOME & FAREWELL DINNERS

Each tour begins with a Welcome Dinner, an ideal opportunity to get to know your fellow passengers; for the Tour Manager to brief you on the trip; and introduce you to the Golden Eagle Luxury Trains team and the Tour Doctor. The Farewell Dinner is the perfect end to your adventure by private train where you can relive the journey and look ahead to future tours.

• GUIDE & INFORMATION PACK

When you board the train there will be a brochure in your cabin detailing more about your journey and the places en-route. Our Tour Manager will organise a programme of briefings on the cities or places we visit and, each evening, will issue a programme for the next day's touring schedule.

• BREAKFAST, LUNCH & DINNER

All departures feature one or two uniquely designed restaurant cars where you can enjoy the excellent waiter-served food and wine. Several times during the tour we will also sample authentic local cuisine off the train.

• DRINKS WITH MEALS

A generous drinks allowance is included with lunch and dinner. For passengers travelling in Gold Class onboard the Golden Eagle, drinks from the Standard Drinks List in the Bar Lounge Car are also included. For Imperial Suite guests, drinks from both the Standard and Premium Bar Lists in the Bar Lounge Car are included.

• ONBOARD SERVICE

You can expect service which is attentive, friendly and unintrusive. Your car attendants provide 24-hour housekeeping and bedding turndown services, with one attendant always on duty to assist you and to ensure you are comfortable in your cabin. Complimentary tea, coffee and bottle drinking water are available in your cabin 24 hours a day.

• GUIDE DURING EXCURSIONS

The history and culture of the places we visit on our rail cruises will come alive through our expert local guides. All our tours include a wide-ranging sightseeing schedule to make the most of the time you have off the train and bring you closer to the culture, people and history of your destinations. We believe it is the special little touches that help create magical memories. Imperial Suite guests will benefit from the option of a private car and guide in the majority of places we visit along the route.

• ALL GRATUITIES

You will not have to worry about tipping on and off the train on your rail journey with Golden Eagle Luxury Trains as all gratuities are included in the tour price.

THE GOLDEN EAGLE DANUBE EXPRESS DIFFERENCE

• FREEDOM OF CHOICE TOURING

Customise your journey and enjoy the opportunity to select from an array of Freedom of Choice Touring options that best suits your interests. Your off-train excursions will still take in all the major attractions of the places we are visiting but, in featured locations, you will be presented when you are onboard the train with a variety of activities from which to choose, and enjoy a tailor-made experience. Look at the individual itineraries where we are operating Freedom of Choice Touring.

Freedom of Choice Touring options may be subject to variations dependent on finalised train timings and local charges. Touring options available will typically be advised in the evening prior to the day's tour.

• PERSONAL HEADSETS

On all the off-train excursions, to enhance your enjoyment and comprehension of the places you visit, you will be provided with a lightweight personal headset on which to listen to your tour guide as you take in the sights. So you do not need to worry about missing any of the interesting details on your excursions.

• DOCTOR & MEDICAL FACILITIES

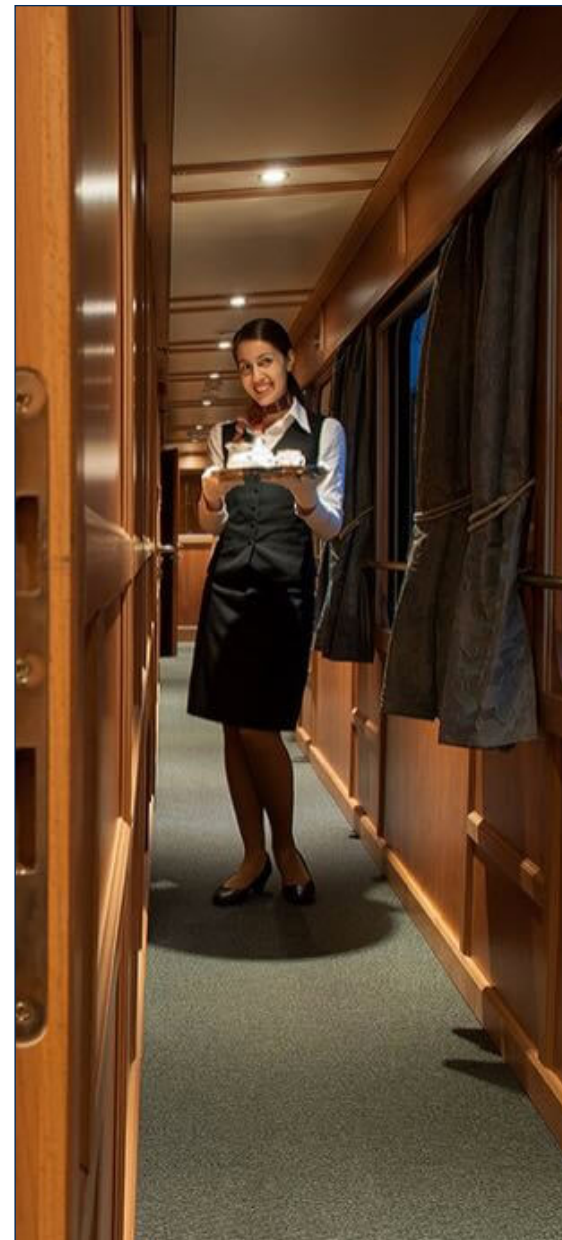
To give you peace of mind our tours are accompanied by a doctor who travels with us for the entire journey; so you can rest assured that medical assistance is always available. On call 24 hours a day, the doctor is on hand to give primary care as required. Normally, the doctor will be English speaking and be registered with the General Medical Council in the UK.

• 24 HOUR SERVICE ATTENDANT

Your car attendants provide 24-hour housekeeping and bedding turndown services, with one attendant always on duty to assist you and to ensure you are comfortable in your cabin. Complimentary tea, coffee and bottled drinking water are available in your cabin 24 hours a day.

• PORTERAGE

As you only have to unpack once, your luggage and belongings will stay with you on the train throughout the journey but, wherever necessary, portorage is included between the hotel and stations.



ABOUT THE DANUBE EXPRESS TRAIN

The Golden Eagle Danube Express is your luxurious hotel-on-wheels. Unpack just the once and settle into your well-appointed and comfortable cabin as you begin this voyage of a lifetime.



THE BAR LOUNGE CAR

The social heart of the Golden Eagle Danube Express is the Bar Lounge Car, a great place to relax and settle into the unhurried pace of life on board.

Unwind in comfortable surroundings and watch the world go by as you get to know your fellow passengers and begin long-lasting friendships. Perhaps read a novel to while away the time or challenge your friends to a game of cards.

It is here that our Tour Manager will also organise a programme of activities. Passengers will receive printed daily itineraries throughout the tour detailing train arrival and departure timings, latest weather forecasts for the next destination and information on the following day's excursions and activities.

The Bar Lounge Car and Restaurant Cars will host an entertaining and enlightening range of activities such as language lessons and engaging talks by expert lecturers on local history and culture.

In the evening enjoy the sounds of the resident pianist playing in the Bar Lounge Car. Every night the bar stays open until the last person leaves.





THE RESTAURANT CAR

The Golden Eagle Danube Express restaurant cars are a delightful venue in which to enjoy meals skilfully prepared by our Executive Chef and his onboard restaurant team using the very best in ingredients, locally sourced wherever possible. Depending on the number of guests onboard, one or two of our restaurant cars will be on every departure.

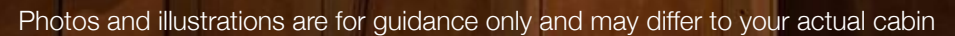
Enjoy the delights of an on-train breakfast each morning - a wide selection of fruit, cereals, orange juice and cold plates are available from our bountiful buffet. Alternatively enjoy a cooked breakfast bought to your table by our waiting staff, all complemented by steaming hot tea and coffee.

For lunch and dinner you will enjoy fine food, great wines and attentive service in the welcoming atmosphere of the restaurant car. We offer a culinary experience that reflects the very essence of the countries we travel through, as well as international cuisine. Vegetarian and other dietary options are also available.

All our meals at lunch and dinner are complemented by an excellent choice of wines from around the world, personally selected by our Company Founder, Tim Littler, along with bottled water, beer and soft drinks.

Meals onboard are a relaxed affair as the restaurant cars can accommodate all our guests in a single sitting. Throughout the journey there is an informal dress code, so you can enjoy our culinary experiences in convivial and relaxed surroundings and with our open-seating policy you can dine wherever, and with whomever, you please.

The new Superior Deluxe cabins, with private en-suite facilities, offer the ultimate in European rail accommodation in terms of space, facilities and comfort.



SUPERIOR DELUXE

With 12 cabins per departure, each cabin offers comfortable daytime seating with a full length sofa and two additional chairs. The large cabin also benefits from two full-size picture windows, one of which is openable to add to the bright and airy feel of the interior.

Each evening the cabin is transformed into a luxurious bedroom with a UK-standard King Size bed. All cabins have, as standard, a large double wardrobe with excellent storage space, individually controlled air-conditioning, lighting with dimmer switches, individual reading lights, in cabin Wi-Fi and USB ports, power sockets and a safe.



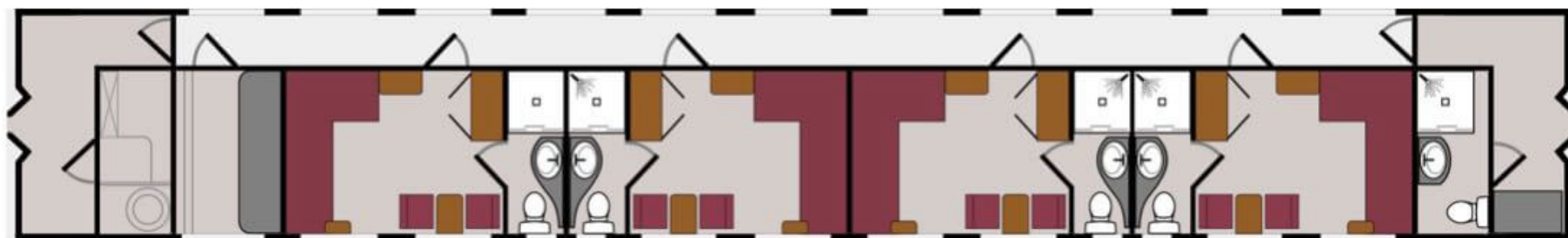
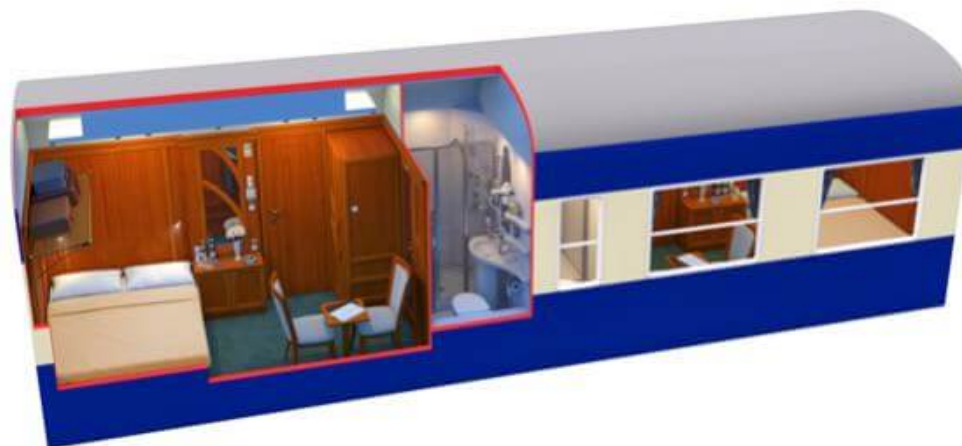
Photos and illustrations are for guidance only and may differ to your actual cabin.



SUPERIOR DELUXE

Photos and illustrations are for guidance only and may differ to your actual cabin.

- Cabins per car: 4
- Cabin length (inc. bathroom): 454cm (14'9")
- Cabin width: 190cm (6'2")
- Cabin area (inc. bathroom): 8.6 m2 (93 ft2)
- Bed size: 190cm x 152cm (6'2" x 5'0")
- King Size bed (UK standard)
- Additional daytime seating with table
- Individually controlled air-conditioning and heating
- Two large picture windows
- Adjustable lighting
- Double wardrobe
- Personal safe
- Wi-Fi & two USB ports
- Private en-suite bathroom with cubicle shower and WC



DELUXE

Each deluxe sleeper carriage has just five spacious yet intimate en-suite cabins offering every convenience and comfort so you may sit back, relax and enjoy the scenery as it rolls by.



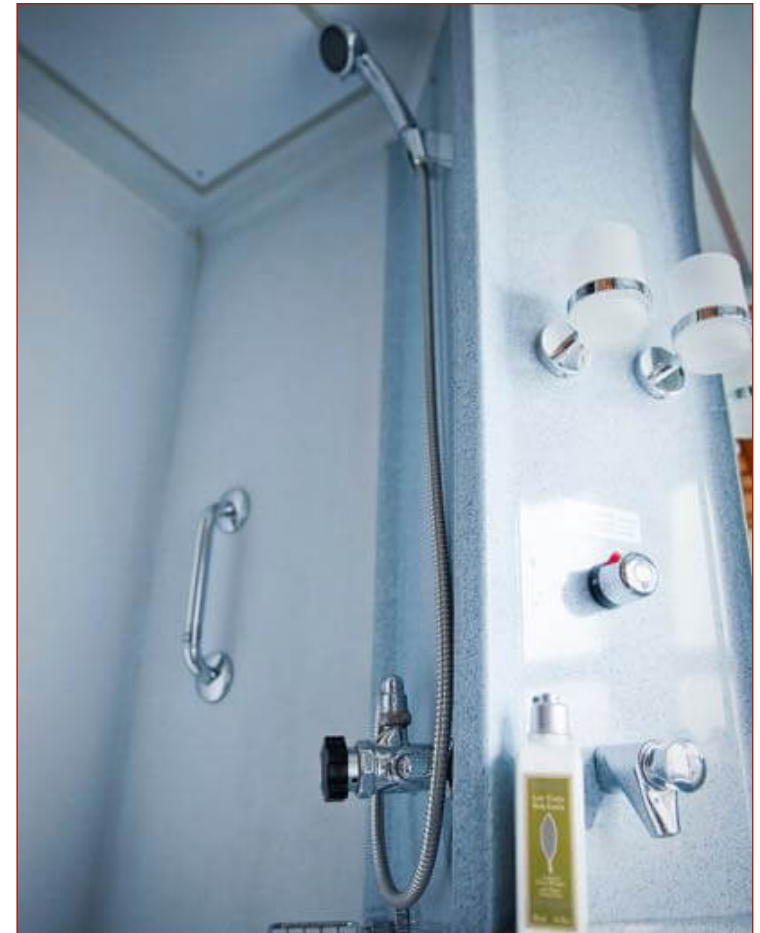
Photos and illustrations are for guidance only and may differ to your actual cabin

DELUXE

Private bathrooms feature a shower with constant hot water, washbasin and toilet. There is a heated towel rail, shaver socket and hairdryer. A range of toiletries and a dressing gown are provided. Cabins have individually controlled air-conditioning, lighting with dimmer switches, individual reading lights, power sockets and a safe. Co-ordinated fabrics complement wood-panelled walls and brass fittings. Two comfortable armchairs provide daytime seating and a free-standing chair adds flexibility. Cupboards and a full length wardrobe provide ample storage whilst the large picture window and full length mirror enhance the spacious feel. A second window will open for fresh air and for that perfect photo opportunity.



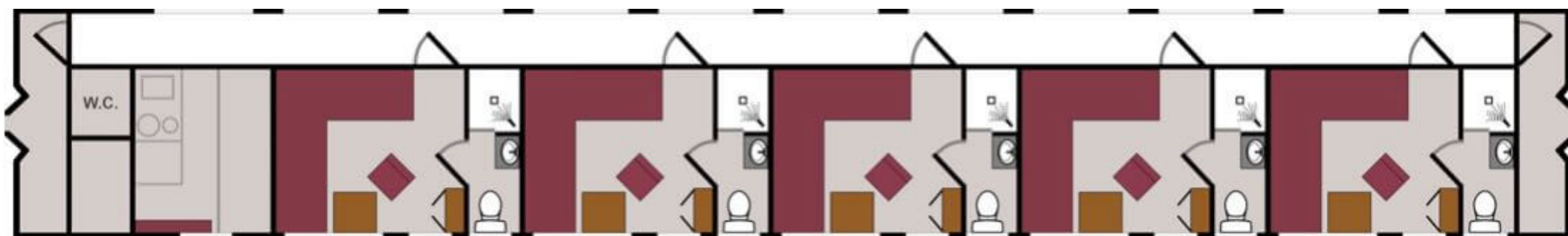
Photos and illustrations are for guidance only and may differ to your actual cabin.



DELUXE

Photos and illustrations are for guidance only and may differ to your actual cabin.

- 5 x 2-bed cabins per carriage
- Cabin size (inc. bathroom): 397cm x 195cm
- Cabin area (inc. bathroom): 7.74m² (83 ft²)
- Bed size (each): 185cm x 80cm (6ft 1" x 2ft 7.5")
- Private en-suite bathroom with cubicle shower & wc: 77cm x 195cm 1.5 m² (16 ft²)
- Remote controlled air-conditioning
- Two armchairs and a free standing chair for daytime seating
- Large picture window – opens partially, perfect for photograph opportunities
- Full length wardrobe and power sockets
- During dinner each evening the living room is converted into two comfortable lower beds by your attendant who is also on hand to bring you early morning tea or coffee.



GOLDEN EAGLE DANUBE EXPRESS - CABIN COMPARISONS

	DELUXE CABIN	SUPERIOR DELUXE CABIN
CABIN AREA	83 sq ft (7.7 sq m)	93 sq ft (8.6 sq m)
CABINS PER CARRIAGE	5	4
DAYTIME CONFIGURATION	Two armchairs and a free-standing chair	Full length sofa, 2 Additional chairs and table
NIGHT TIME CONFIGURATION	2 lower L shaped Twin Beds	King Size Bed (UK standard)
BED SIZE	Each bed: 6ft 1ins x 2ft 74ins / 185cm x 80cm	6ft 2ins x 5ft 0ins / 190cm x 152cm
BATHROOM	Private en-suite bathroom with cubicle shower and WC	Private en-suite bathroom with cubicle shower and WC
AIR CON / HEATING	Remote controlled air-conditioning	Individually controlled air conditioning and heating
LIGHTING	Dimmer switches, Individual reading lights	Dimmer switches, Individual reading lights
WINDOW	Large picture window – opens partially	Two large picture windows
WARDROBE/STORAGE	Full length wardrobe	Double wardrobe & personal safe, additional cupboards
Wi-Fi / USB	Wi-Fi	Wi-Fi & two USB ports
ADDITIONAL AMENITIES	Bathrobes, slippers hair dryer and luxury toiletries provided	Bathrobes, slippers hair dryer and luxury toiletries provided
DRINK INCLUSIONS	Complimentary Drinks in the Bar Lounge Car	Complimentary Drinks in the Bar Lounge Car
LAUNDRY INCLUDED	Charge applies	Charge applies

GOLDEN EAGLE DANUBE EXPRESS IMPORTANT INFORMATION

• WHAT IS INCLUDED IN THE PRICE?

All accommodation as per the itinerary - both on board the train and in hotels; all meals starting with dinner on the first day; a generous allowance of wine, beer, soft drinks and tea and coffee with all lunches and dinners both on and off the train; all arrival and departure transfers; guided off-train sightseeing excursions; the services of experienced Tour Leaders; all gratuities; and a Doctor travelling with the group. We do not take any responsibility for any passengers in possession of incorrect or invalid visas. Please contact our Customer Services department for help and information. For customers in the United Kingdom we can put you in contact with our recommended visa support agency.

• INSURANCE

It is a booking condition that you must be fully insured for any medical expenses that may be incurred whilst travelling. You will be asked to provide us with the name of your insurer and your policy number together with the 24-hour medical emergency assistance contact number. We will require this information at least six weeks prior to travelling with us.

• VACCINATIONS

We will continue to look for the most up-to-date health and safety recommendations from both the World Health Organization (WHO) and international governments, including vaccination requirements for Covid-19, and will continue to update our policies accordingly for your added peace of mind.

• ON BOARD DOCTOR

We provide a Doctor on board all our tours who is available 24-hours a day. They carry a fully stocked medical kit but it is your responsibility to ensure that you obtain any vaccinations, prescribed and precautionary medicine for the countries you are visiting before travelling with us.

• INTERNATIONAL & DOMESTIC FLIGHTS

Flights are not included (unless part of the itinerary) but we can advise fares and book them for you if the flights originate in the UK. Please note that we do not advise that you book flights more than 60 days in advance of the tour departure date (see Booking Conditions).

• HOTEL ACCOMMODATION

Hotel accommodation as described in the tour itinerary is included in the price of the tour. Room upgrades are available on request, subject to availability and at an additional cost.

• ITINERARIES

Accommodation and tour itineraries are subject to change at any time due to circumstances beyond our control. Every effort will be made to operate tours as advertised and as per the rail timings received.

• WHAT IS NOT INCLUDED IN THE PRICE?

International and domestic airfares (unless part of the itinerary); visa and excess baggage charges; insurance. Personal expenses such as drinks in the Bar Lounge Car or laundry. On some tours there may also be an occasional optional activity that needs to be paid for locally.

• MEETING POINTS

Details of hotel/airport meeting points will be printed on the departure packs that will be sent to you one month prior to departure.

• ACCESS TO WI-FI

Wi-Fi is available on board for guest use whilst travelling in Europe. The Wi-Fi connection is dependent on cellular signal and there will be times when we will be travelling through areas with limited or zero coverage. Therefore, please do not expect a reliable service when the train is moving through remote areas.

• PASSPORT AND VISA INFORMATION

It is your responsibility to be in possession of a valid passport and visa for your trip. A passport with a minimum of 6 months validity is required for all our rail tours. Many of the remote and exotic countries we visit require visas. Visa costs are not included in the price of the tour and these must be purchased independently. This can often be an involved and time consuming process and, as this is such an important aspect of your holiday, we can assist you with advice and any supporting documentation.

• SINGLE TRAVELLERS

Many of our guests are single travellers and of course passengers travelling as small groups, families, couples or singles are all equally welcome.

• SPECIAL REQUESTS

We pride ourselves on offering you a personalised and knowledgeable service and will make every effort to meet any of your special dietary, room or travel requests. Also we are very happy to cater for any special occasion or anniversary that you are celebrating whilst you are with us. Please advise us at the time of booking.

• GRATUITIES

All gratuities are included in the tour price and we strongly encourage passengers to refrain from offering gratuities to crew/hoteliers/drivers etc. We would prefer passengers to inform our management of any exceptional service received, and we will reward accordingly.

• LANGUAGE

The primary tour language will be English. French, German and Spanish speaking guides are available on request at an additional cost. Please contact us for more information. Other languages may be available on request.

• TRAVELLER HEALTH CONDITIONS

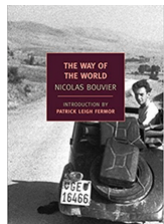
To get the most out of our tours, passengers must be able to walk at least a mile per day at normal walking speed. The traveller represents that neither he/she has any physical or mental condition or disability that could create a hazard to him/herself or other members of the tour. We reserve the right to refuse travel to anyone who, in the opinion of the Tour Doctor or Tour Manager would be incapable of completing the tour or would cause unacceptable delays to the rest of the group. In these circumstances there would be no refund for any unused part of the tour. If in doubt, please call us for advice.

• MINIMUM PASSENGER REQUIREMENTS

All our rail tours require a minimum number of passengers to operate. Should this not be reached, we will offer an alternative tour. If no alternative is suitable a full refund will be offered.

• BOOKING CONDITIONS

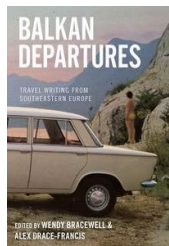
Our full booking conditions can be found at <https://theluxurytraintravelcompany.com/booking-terms-conditions/>



THE WAY OF THE WORLD

NICHOLAS BOUVIER

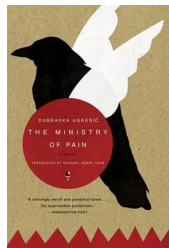
A well-written travelogue, and one of only a handful that deserves to still be read today, both for its style, as well as its unsurpassed account of the regions traveled. From the Balkans to Turkey, 2 artists bumble slowly across Iran, Pakistan and Afghanistan in the early 50's.



BALKAN DEPARTURES

WENDY BRACEWELL & ALEX DRACE-FRANCIS

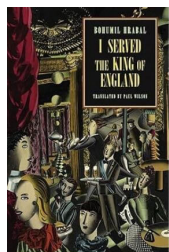
The Balkan region's writers have given accounts of their travels in the West and elsewhere, saying something in the process about themselves and their place in the world. This book challenges assumptions of Western discursive hegemony, while at the same time exploring Balkan 'Occidentalisms'.



THE MINISTRY OF PAIN

DUBRAVKA UGREŠIĆ

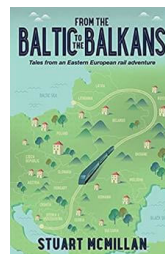
The Ministry of Pain is a historical book on the convoluted past of Yugoslavia, as well as a realistic, comic, and heart-felt chronicle of the lives of a group of Balkan refugees who study in the Netherlands, guided by their young teacher Tanja Lucić.



I SERVED THE KING OF ENGLAND

BOHUMIL HRABAL

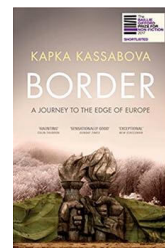
In The Grand Budapest Hotel film takes Bohumil Hrabal's fluid whimsy and reduces it to the consistency of syrupy, saccharine quirkiness. I Served the King of England gets its dues in Paul Wilson's light-handed translation. This is one of Central Europe's great hotel novels, witty and deep, set in Prague, and the city's provincial clones.



FROM THE BALTIC TO THE BALKANS

STUART MCMILLAN

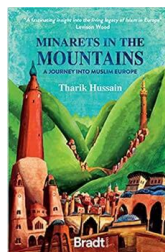
Inspired by a life-long passion for travel, Stuart McMillan embarked on a journey of over 2,000km, crossing the continent from the Baltic Sea to the Balkan coast. The book provides personal observations and reflections on a fascinating world hidden for decades behind an Iron Curtain.



BORDER: A JOURNEY TO THE EDGE OF EUROPE

KAPKA KASSABOVA

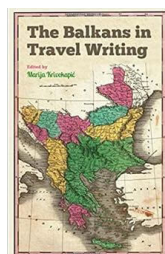
When Kapka Kassabova was a child, the borderzone between Bulgaria, Turkey and Greece was rumoured to be an easier crossing point into the West than the Berlin Wall so it swarmed with soldiers, spies and fugitives. Border is a sharply observed portrait of a little-known corner of Europe.



MINARETS IN THE MOUNTAINS

THARIK HUSSAIN

A magical, eye-opening account of a journey into a Europe that rarely makes the news and is in danger of being erased altogether. Another Europe. A Europe few people believe exists and many wish didn't. Muslim Europe.



THE BALKANS IN TRAVEL WRITING

MARIJA KNEŽEVIĆ

This book revisits images of the Balkans in twentieth-century travel writing that vividly mirrors the turbulent changes that the region went through.